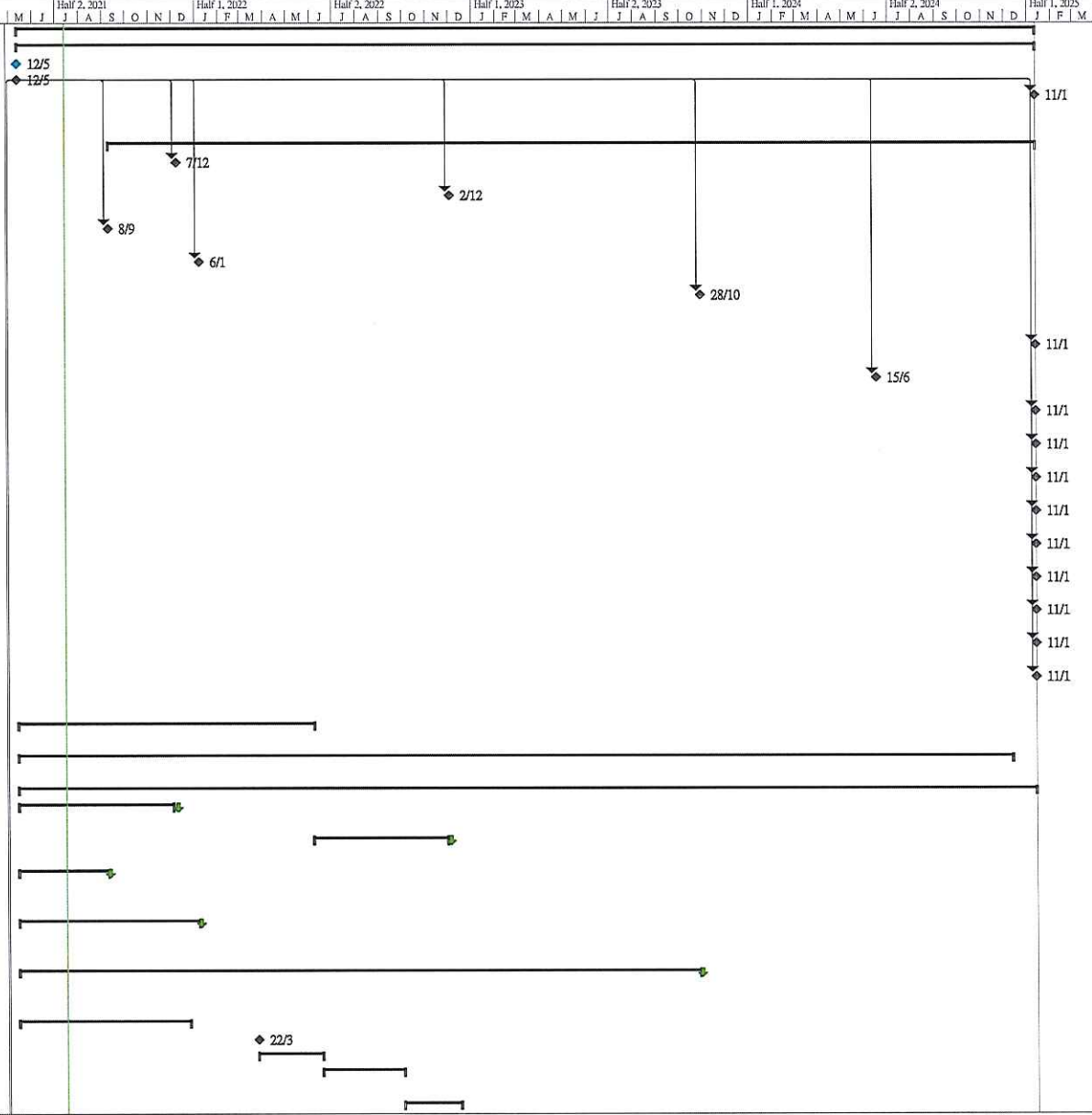


NL/2020/05 - TUNG CHUNG NEW TOWN EXTENSION - SITE FORMATION AND INFRASTRUCTURE WORKS AT MA WAN CHUNG
INITIAL WORKS PROGRAMME

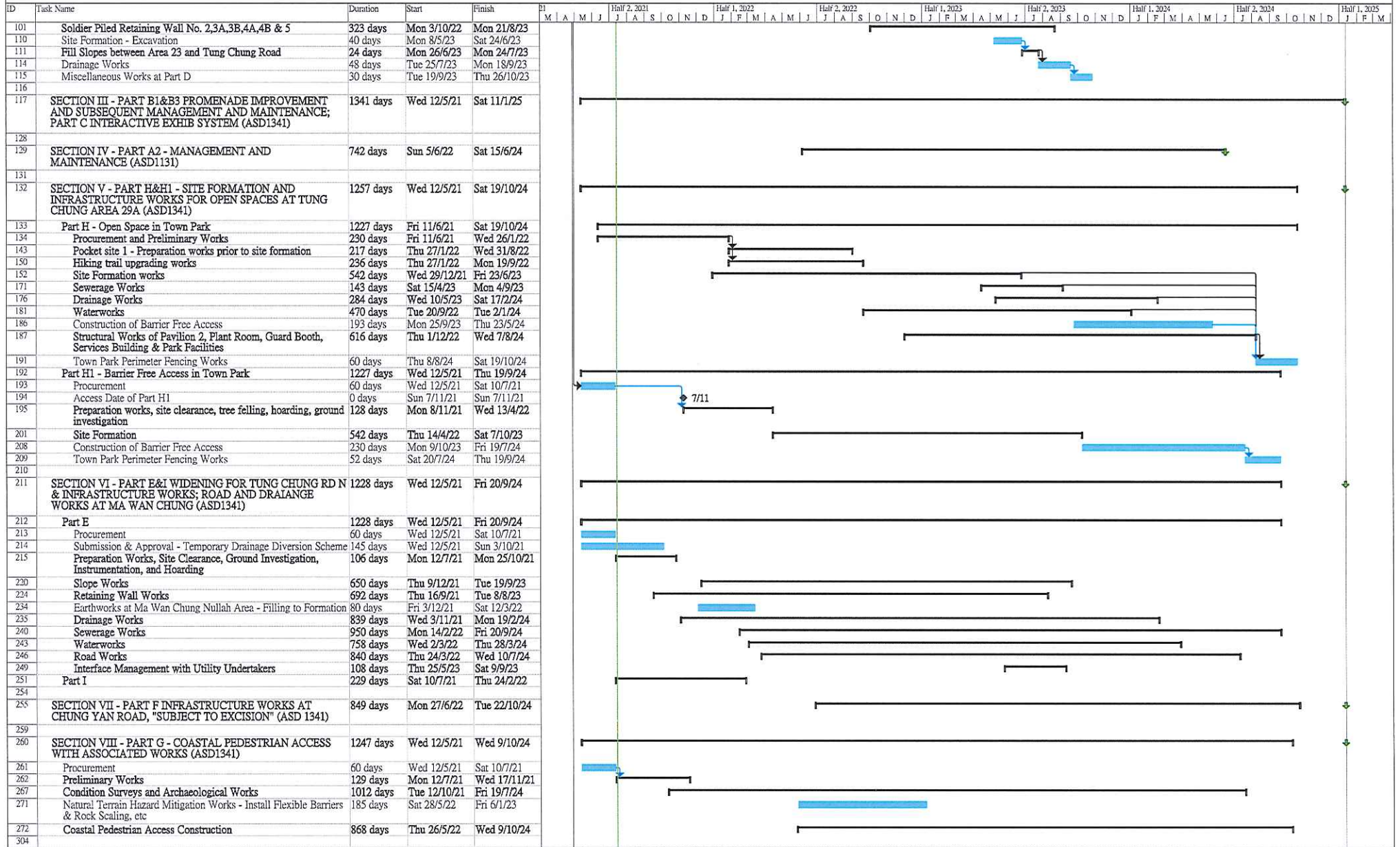
ID	Task Name	Duration	Start	Finish	B1	Half 1, 2021							Half 2, 2022							Half 1, 2023							Half 2, 2023							Half 1, 2024							Half 2, 2024							Half 1, 2025																					
						M	A	M	J	J	A	S	O	N	D	J	F	M	A	M	J	J	A	S	O	N	D	J	F	M	A	M	J	J	A	S	O	N	D	J	F	M	A	M	J	J	A	S	O	N	D	J	F	M	A	M	J	J	A	S	O	N	D	J	F	M	A	M	J
1	CONTRACT PARTICULARS	1341 days	Wed 12/5/21	Sat 11/1/25																																																																	
2	COMMENCEMENT AND COMPLETION DATES	1341 days	Wed 12/5/21	Sat 11/1/25																																																																	
3	Contract Date - 12 May 21	0 days	Wed 12/5/21	Wed 12/5/21																																																																	
4	Project Starting Date (ASD) 12 May 21	0 days	Wed 12/5/21	Wed 12/5/21																																																																	
5	Completion Date for the Works including Establishment Works 365 days (ASD1341, 11 Jan 25)	0 days	Sat 11/1/25	Sat 11/1/25																																																																	
6																																																																					
7	CONTRACT SECTIONAL COMPLETION	1221 days	Wed 8/9/21	Sat 11/1/25																																																																	
8	KeyDate-1 - Completion of the promenade improvement works within Part B1 of the Site (ASD210)	0 days	Tue 7/12/21	Tue 7/12/21																																																																	
9	KeyDate-2 - Completion of the promenade improvement works within Part B3 of the Site (ASD570)	0 days	Fri 2/12/22	Fri 2/12/22																																																																	
10	KeyDate-3 Completion of renovation works of site office for site accomm of PM & Contractor within Part A1 (ASD120)	0 days	Wed 8/9/21	Wed 8/9/21																																																																	
11	Section I - Design and carry out renovation works of ex site office for NGOs within Part B2 (ASD240)	0 days	Thu 6/1/22	Thu 6/1/22																																																																	
12	Section II - Demolition of ex. Bldg struct. Site formation with associated works including geotechnical works within Part D (ASD900)	0 days	Sat 28/10/23	Sat 28/10/23																																																																	
13	Section III - Promenade improv works & subseq mgmt & maint B1&B3/ Int Exhib System at CLC Part C (ASD1341)	0 days	Sat 11/1/25	Sat 11/1/25																																																																	
14	Section IV - Management and maintenance of Part A2 of the Site (ASD1131)	0 days	Sat 15/6/24	Sat 15/6/24																																																																	
15	Section V Site form & infras works for open spaces at Tung Chung Area 29A within Parts H & H1 (ASD1341)	0 days	Sat 11/1/25	Sat 11/1/25																																																																	
16	Section VI - Widening for Tung Chung Rd N & asso infras works, R&D works at Ma Wan Chung within Part E & I (ASD1341)	0 days	Sat 11/1/25	Sat 11/1/25																																																																	
17	Section VII - Infras works at Chung Yan Rd within Part F which is "Section subject to Excision" (ASD1341)	0 days	Sat 11/1/25	Sat 11/1/25																																																																	
18	Section VIII - Coastal Pedestrian Access with associated works within Part G (ASD1341)	0 days	Sat 11/1/25	Sat 11/1/25																																																																	
19	Section VIIIA - The remaining works not included in Sections I to X, XA & XI (ASD1341)	0 days	Sat 11/1/25	Sat 11/1/25																																																																	
20	Section IX - Landscape softworks and associated Establishment works within Parts H & H1 (ASD 1341)	0 days	Sat 11/1/25	Sat 11/1/25																																																																	
21	Section X - Landscape softworks and associated establishment works within Parts E & I (ASD1341)	0 days	Sat 11/1/25	Sat 11/1/25																																																																	
22	Section XA - Landscape softworks and asso Est works within Part F which is "Section subject to Excision" (ASD1341)	0 days	Sat 11/1/25	Sat 11/1/25																																																																	
23	Section XI - Landscape softworks and associated Establishment works within Part G (ASD1341)	0 days	Sat 11/1/25	Sat 11/1/25																																																																	
24																																																																					
25	ACCESS DATE	390 days	Wed 12/5/21	Sun 5/6/22																																																																	
33																																																																					
34	PRELIMINARY WORKS AND SUBMISSION	1310 days	Wed 12/5/21	Wed 11/12/24																																																																	
56																																																																					
57	CONSTRUCTION	1341 days	Wed 12/5/21	Sat 11/1/25																																																																	
58	KEY DATE-1 - PART B1 COMPLETION OF PROMENADE IMPROVEMENT WORKS (ASD210)	204 days	Wed 12/5/21	Wed 1/12/21																																																																	
62	KEY DATE-2 - PART B3 COMPLETION OF PROMENADE IMPROVEMENT WORKS (ASD570)	177 days	Sun 5/6/22	Mon 28/11/22																																																																	
65	KEY DATE-3 PART A1 COMPLETION OF RENOVATION AT EX SITE OFFICE PM & CONTRACTOR ACCOMM (ASO120)	119 days	Wed 12/5/21	Tue 7/9/21																																																																	
68																																																																					
69	SECTION I - PART B2 DESIGN AND CARRY OUT RENOVATION WORKS OF EXISTING SITE OFFICE FOR NGOS	238 days	Wed 12/5/21	Tue 4/1/22																																																																	
75																																																																					
76	SECTION II - PART D DEMOLITION OF EX BLDG. SITE FORMATION WITH ASSOCIATED WORKS INCL. GEOT WORKS (ASD 900)	898 days	Wed 12/5/21	Thu 26/10/23																																																																	
77	Procurement and submission	225 days	Wed 12/5/21	Wed 22/12/21																																																																	
80	Access Date of Part D	0 days	Tue 22/3/22	Tue 22/3/22																																																																	
81	Preliminary Works	85 days	Wed 23/3/22	Wed 15/6/22																																																																	
88	Removal of Asbestos and Demolition of Existing Structures at Area 23	107 days	Thu 16/6/22	Fri 30/9/22																																																																	
99	Interface with Housing Department & Ground Investigation	75 days	Sat 1/10/22	Wed 14/12/22																																																																	



IWP Rev 0
Date: 12/5/2021

Task	Summary	Inactive Milestone	Duration-only	Start-only	External Milestone	Critical Split
Split	Project Summary	Inactive Summary	Manual Summary Rollup	Finish-only	Deadline	Progress
Milestone	Inactive Task	Manual Task	Manual Summary	External Tasks	Critical	Manual Progress

NL/2020/05 - TUNG CHUNG NEW TOWN EXTENSION - SITE FORMATION AND INFRASTRUCTURE WORKS AT MA WAN CHUNG
INITIAL WORKS PROGRAMME



IWP Rev 0 Date: 12/5/2021	Task		Summary		Inactive Milestone		Duration-only		Start-only		External Milestone		Critical Split
	Split		Project Summary		Inactive Summary		Manual Summary Rollup		Finish-only		External Milestone		Critical Progress
	Milestone		Inactive Task		Manual Task		Manual Summary		External Tasks		Critical		Manual Progress

NL/2020/05 - TUNG CHUNG NEW TOWN EXTENSION - SITE FORMATION AND INFRASTRUCTURE WORKS AT MA WAN CHUNG
INITIAL WORKS PROGRAMME

ID	Task Name	Duration	Start	Finish	21																																																											
					M	A	M	J	Half 2, 2021				Half 1, 2022				Half 2, 2022				Half 1, 2023				Half 2, 2023				Half 1, 2024				Half 2, 2024				Half 1, 2025																											
					J	A	S	O	N	D	J	F	M	A	M	J	J	A	S	O	N	D	J	F	M	A	M	J	J	A	S	O	N	D	J	F	M	A	M	J	J	A	S	O	N	D	J	F	M	A	M	J	J	A	S	O	N	D	J	F	M	A	M	J
305	SECTION VIII A - REMAINING WORKS NOT INCLUDED IN SECTIONS I TO X, XA AND XI (ASD1341)	998 days	Fri 21/1/22	Mon 14/10/24																																																												
307																																																																
308	SECTION IX - LANDSCAPE SOFTWORKS AND ASSOCIATED ESTABLISHMENT WORKS WITHIN PARTS H & HI	521 days	Mon 31/7/23	Wed 1/1/25																																																												
312																																																																
313	SECTION X - LANDSCAPE SOFTWORKS AND ASSOCIATED ESTABLISHMENT WORKS WITHIN PARTS E & I	897 days	Sat 23/7/22	Sat 4/1/25																																																												
319																																																																
320	SECTION XA - LANDSCAPE SOFTWORKS AND ASSOCIATED ESTABLISHMENT WORKS WITHIN PART F "SECTION SUBJECT TO EXCISION"	436 days	Fri 13/10/23	Sat 21/12/24																																																												
323																																																																
324	SECTION XI - LANDSCAPE SOFTWORKS AND ASSOCIATED ESTABLISHMENT WORKS WITHIN PART G	435 days	Wed 13/9/23	Wed 20/11/24																																																												
327																																																																
328																																																																
329																																																																
330																																																																

IWP Rev 0
Date: 12/5/2021

Task		Summary		Inactive Milestone		Duration-only		Start-only		External Milestone		Critical Split	
Split		Project Summary		Inactive Summary		Manual Summary Rollup		Finish-only		Deadline		Progress	
Milestone		Inactive Task		Manual Task		Manual Summary		External Tasks		Critical		Manual Progress	

