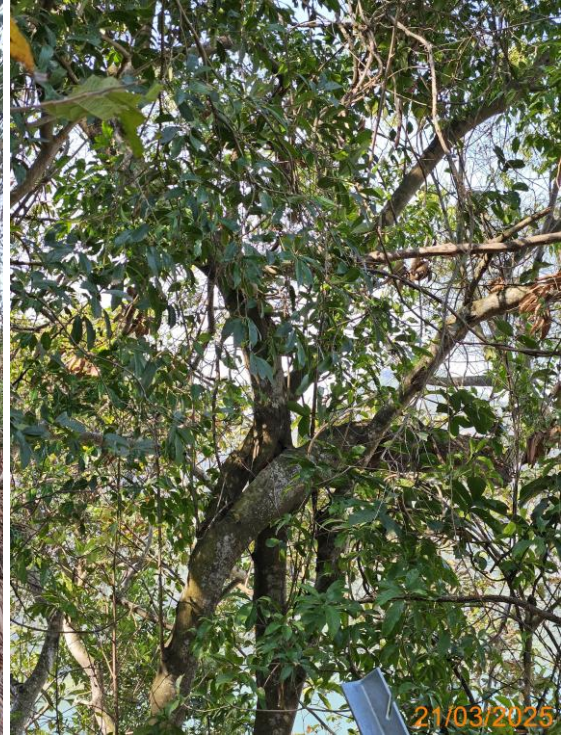




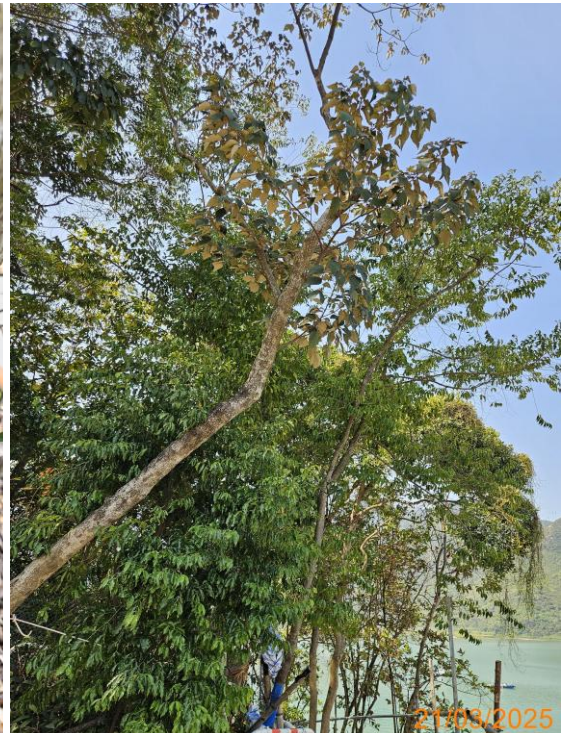
1: T8217



2: T8217_Cross branches



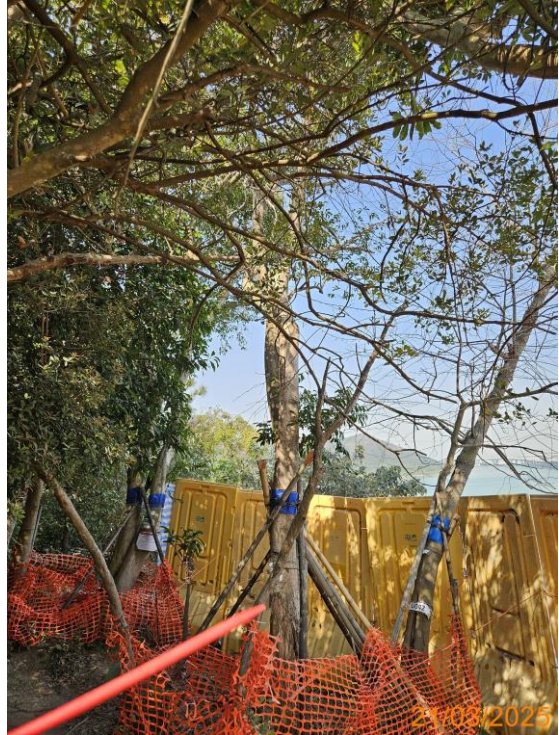
3: T8217_Trunk base



4: T8231



5: T8231_Trunk base



6: U041



7: U041_Abnormal bark crack on trunk



8: U041_Abnormal bark crack on trunk_Close up



9: U041_Crack on trunk



10: U041_Crown



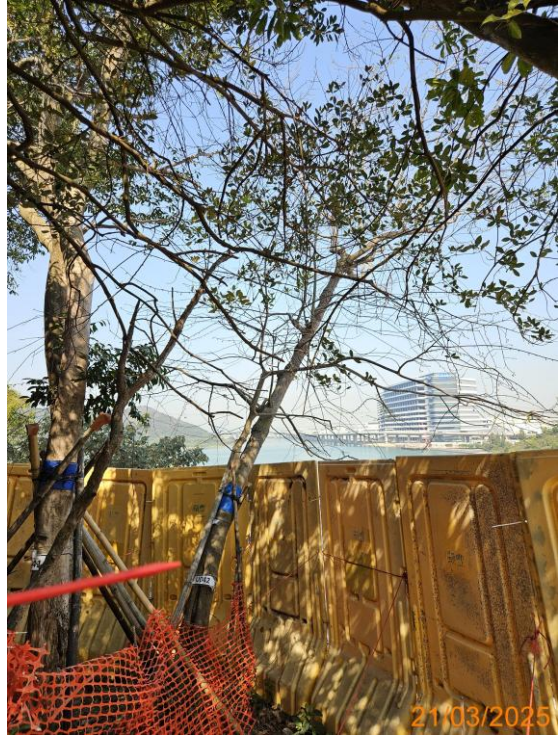
11: U041_Wood damage at trunk union#1



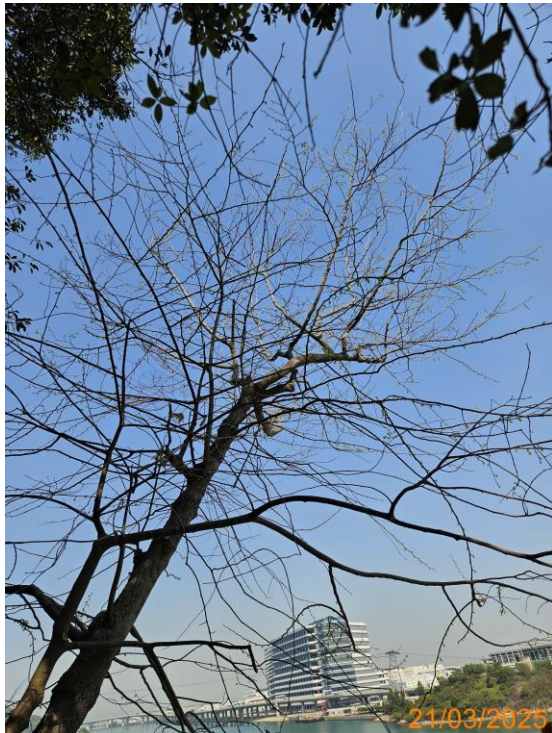
12: U041_Wood damage at trunk union#2



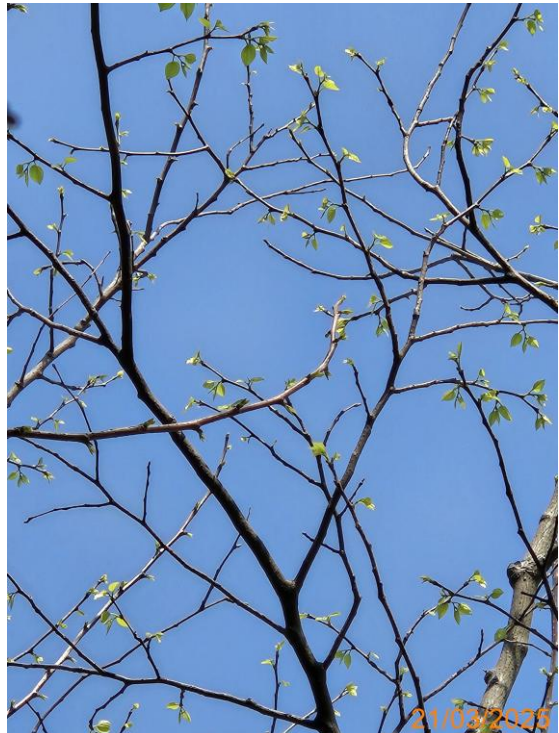
13: U041_Wood damage at trunk union#3



14: U042



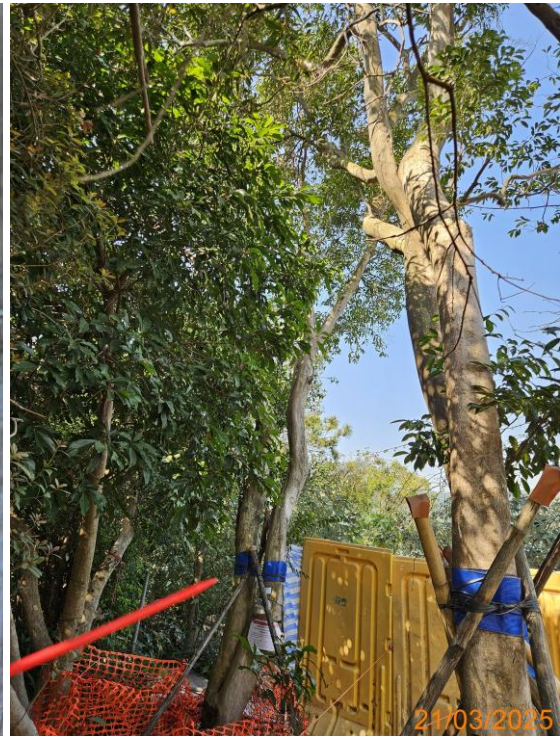
15: U042_Resprout of leave



16: U042_Resprout of leave_Close up



17: U042_Wound at trunk base



18: U043



19: U043_Crack on trunk



20: U043_Crown



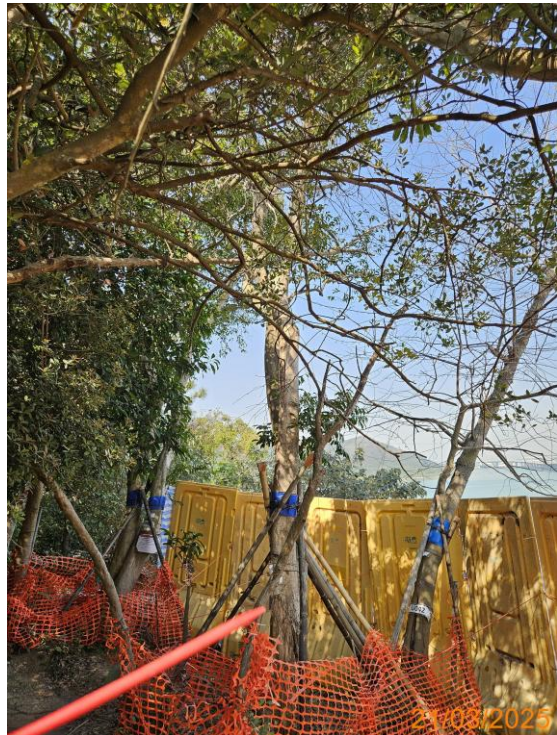
21: U043_Wound on trunk#1



22: U043_Wound on trunk#2



23: U043_Wound on trunk#3



24: Temporary protective fencing for U041, U042
and U043



25: Application of pesticide for U043



26: Adjust protection pad for T8231

Tree Schedule for Survey of Plant Species of Conservation Importance

Tree No.	Species			Measurements			Amenity Value (High(H) / Medium (M) / Low(L))	Tree Condition (Good(G) / Average(A) / Poor(P))			Recommendation (Retain / Transplant / Remove)	Findings	Remark
	Scientific Name	Chinese Name	Conservation Status	Height (m)	DBH (mm)	Crown Spread (m)		Form	Health	Structure			
T8217	<i>Canthium dicoccum</i>	魚骨木	IUCN:VU	9	220	6	L	P	A	P	Retain	No Particular Observation	There is no proper and safe assess towards T8231 & T8217, thus, plastics barriers were installed in lieu of 2m high barrier.
T8231	<i>Canthium dicoccum</i>	魚骨木	IUCN:VU	7	190	6	L	P	A	P	Retain	No Particular Observation	There is no proper and safe assess towards T8231 & T8217, thus, plastics barriers were installed in lieu of 2m high barrier. Epicormic branch failure was found on 3 May 2024. Staking, pruning of jagged wound and application of insecticide and fungicide was conducted on 4 February 2025.
U041	<i>Aquilaria sinensis</i>	土沉香	RPPHK; Cap.586; IUCN:VU	10	318	4	M	A	P	P	Retain	No obvious old termite track was found, damage of wood tissue was observed. Peeling off of bark and sign of split of internal wood tissue was observed. Trunk wound significantly decayed. Abnormal bark crack was found on trunk. High trunk failure risk.	Located closed to cut slope and fenced off by 2m high barrier.The crack on trunk was found slightly larger since late March 2024. Peeling off of bark and split of internal wood tissue was observed in July 2024. Abnormal bark crack was found in December 2024. Adjustment of guying was conducted on 4 February 2025. Application of insecticide and fungicide was conducted on 4 February 2025.
U042	<i>Gmelina chinensis</i>	石梓	RPPHK	6	150	2	M	A	P	A	Retain	Large wound near trunk base with wound wood development. Trunk wound is decaying.	Located closed to cut slope and fenced off by 2m high barrier. Application of insecticide was conducted on 4 February 2025.
U043	<i>Aquilaria sinensis</i>	土沉香	RPPHK; Cap.586; IUCN:VU	9	310	4	M	A	P	P	Retain	Crack on trunk base. Trunk wound significantly decayed. High trunk failure risk.	Located closed to cut slope and fenced off by 2m high barrier. . Application of insecticide and fungicide was conducted on 4 February 2025.

RPPHK - Species included in AFCD publication "Rare and Precious Plants of Hong Kong (2003)"
Cap.586 – Native plants listed in Protection of Endangered Species of Animals and Plants Ordinance, Cap. 586.
IUCN:VU – "Vulnerable" under IUCN Red List of Threatened Species